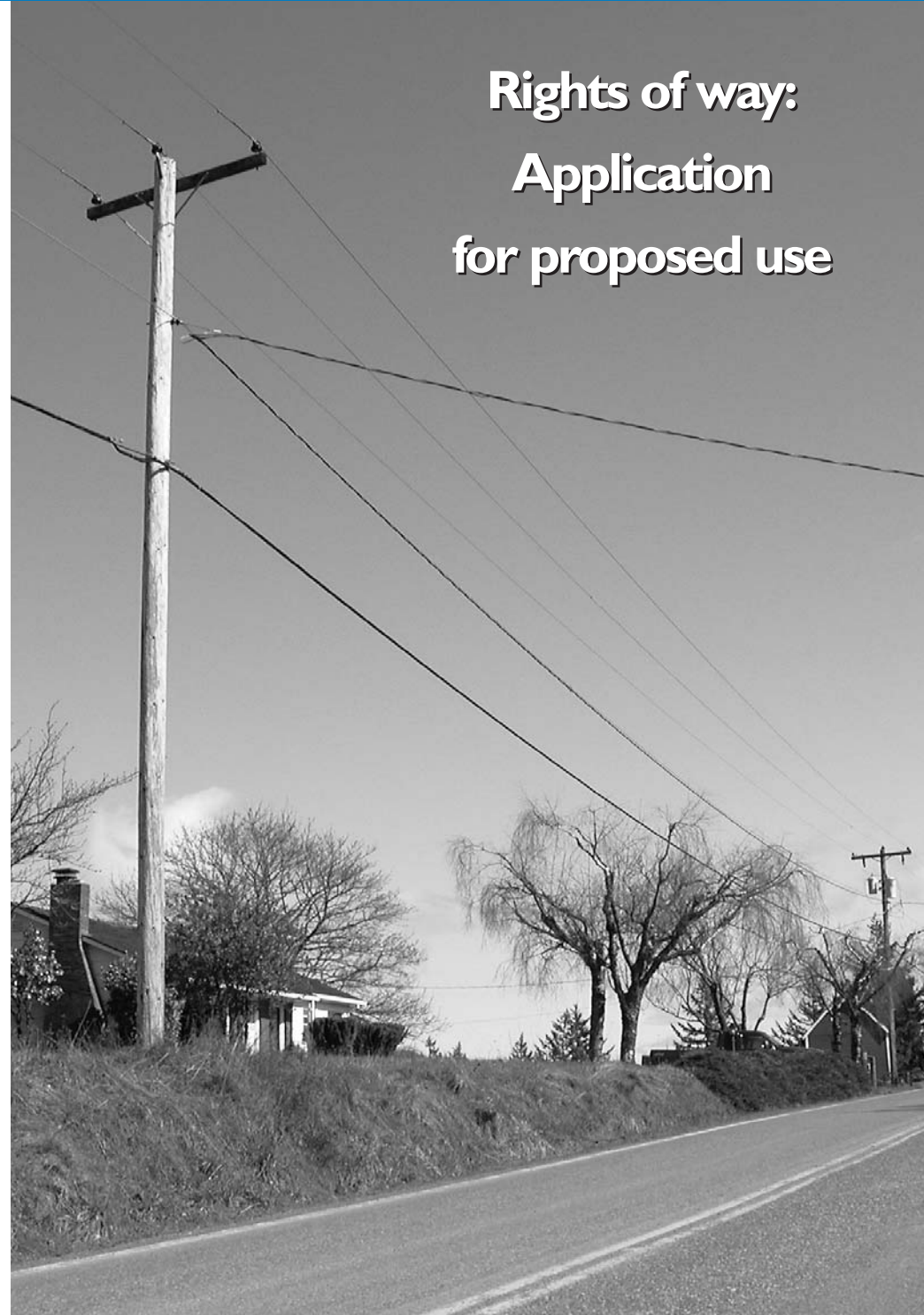


# Rights of way: Application for proposed use

For questions or more information about line extensions, easements and Rocky Mountain Power's process, please call toll free at 1-888-221-7070.



# Rights of Way Information

## The power grid system and rights of way

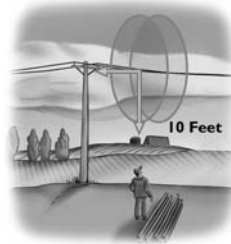
Electricity powers our world through a complex and carefully engineered network of transmission and distribution lines that carry electricity to homes and businesses. Rocky Mountain Power acquires easements to ensure that it has the legal right to maintain its power lines and the integrity of the system. The easement rights obtained are for the safety of the public, Rocky Mountain Power personnel and protection of Rocky Mountain Power's valuable facilities and equipment. Violations of the easement may indicate a violation of the National Safety Electric Code, and worse yet, could create serious – even deadly – threats to public safety.

## Access

Rocky Mountain Power crews must be able to access facilities, including power poles, wires and transformers, at all times. The property owner assumes certain liability and financial consequences should Rocky Mountain Power have difficulty accessing its facilities and equipment.

## Easements

Rocky Mountain Power acquires easements from private property owners to safely and efficiently operate, maintain and access power lines. These easements are recorded in county public records and are shown on title policies. Easements remain valid even when property is



purchased or sold. Rocky Mountain Power may also have easement rights that do not appear on title policies but are never the less valid.

## Trees and easements

Trees are one of the most common causes of electrical service interruptions. Generally, Rocky Mountain Power easements specify that the utility can prune or remove trees that hinder access to utility equipment and lines.

To reduce the need for pruning or removal, be sure you choose an appropriate tree for the space. Please visit [rockymtnpower.net](http://rockymtnpower.net) for a complete list of trees that are appropriate for planting near or under power lines.

## Safety matters – always maintain a 10-foot Circle of Safety

Keep everything – you, the tools, the materials you are handling and the equipment you are operating – at least 10 feet away from all power lines. This is referred to as the “10-Foot Circle of Safety.” Ten feet is the minimum required distance you must have when working near power lines of 50,000 volts or less. Not only is this an important safety rule, it is an

Occupational Safety and Health Administration (OSHA) regulation, and it is a law. Those caught violating the Circle of Safety can be fined. **If the voltage is higher than 50,000 volts, even greater distance from the wires is required for safety.**

Your safety is important to Rocky Mountain Power. For information on safe distances to keep around high-voltage power lines, order a free brochure on the overhead line safety act for your state online at [rockymtnpower.net](http://rockymtnpower.net).

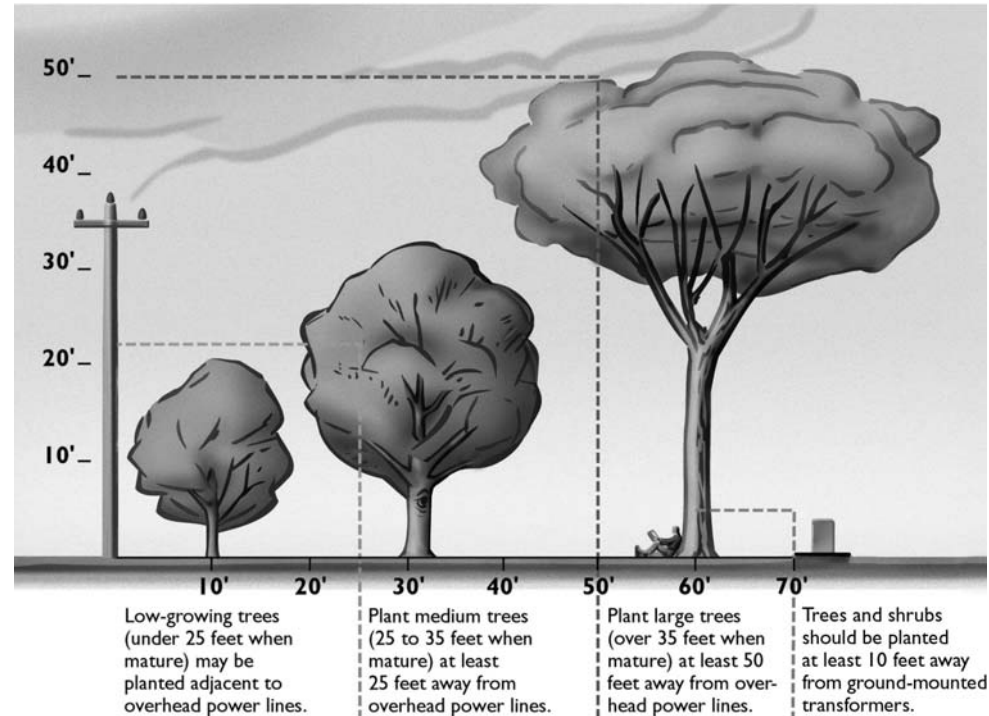
## Digging

Property owners who need to dig on their property or easement must first call a locating service to identify and mark any underground utility lines.

## Differences between distribution and transmission lines

	Distribution line	Transmission line
<b>Distinction</b>	Power is distributed from substations to customers	Power is transmitted from generating stations to substations
<b>Categorization</b>	By voltage rating	By voltage rating
<b>Voltage</b>	Lower voltage Ranges from 7.5 kV to 34 kV	Higher voltage Ranges from 46 kV to 500 kV
<b>Easement width</b>	Range from 10 feet up to 30 feet	Range from 25 feet up to 300 feet
<b>Identification</b>	Yellow metal license plate tag on pole	Silver metal numbers on pole (i.e. 1/47)

## Typical Distribution line



Call Rocky Mountain Power at 1-888-221-7070 for the number of the locating service in your area. Rocky Mountain Power encourages landowners not to build on or near underground power lines. An easement document or local Rocky Mountain Power office will provide setback requirements.

### Free safety education materials and presentations

Rocky MountainPower offers free safety brochures, posters, stickers, and videos to its customers and community members. Visit the safety catalog online at [rockymynpower.net](http://rockymynpower.net) under "Safety," or call 1-800-375-7085 to order.

### Please do not block easements

Rocky Mountain Power needs immediate access during outages and other

emergencies to safely and quickly restore power. That response is significantly hindered if fences, livestock or other equipment block access.

If crews must access power lines, risk of damage or removal of property may result. Property owners who violate easement agreements are potentially liable for any property damage, fence replacement or any other damages that may result if Rocky Mountain Power needs to access its facilities. Not only does this pose a delay in restoring power, but crews must also take extra risks in removing these sometimes dangerous barriers.

Periodic access for normal maintenance activities is also necessary to ensure power safety and reliability.

Objects or buildings placed underneath or too close to power lines pose serious safety concerns and could be

a violation of required clearances.

Flammable items, such as hay bales, may catch fire. Long or tall items, such as irrigation pipes may accidentally be raised into overhead lines when being moved, electrocuting the person holding them. Since electricity can arc, it is possible to receive contact by coming close to a line without touching it.

For questions on proper access to easements, please call 1-888-221-7070 or visit [rockymtnpower.net](http://rockymtnpower.net).

### Completing the application

Landowners may use their property encumbered by a power line easement for any purpose provided that the use does not interfere with the easement rights. In order to ensure your proposed use is acceptable around power lines, please complete the attached application. In addition, be sure to include a detailed drawing of your proposed use. This should include all dimensions of the proposed use and measurements from Rocky Mountain Power's structures. Rocky Mountain Power will use this information to conduct a safety review, so please include as much detail as possible. If you have questions about completing the application, please contact Rocky Mountain Power at 1-888-221-7070 and request to speak with the Rights-of-Way department.

Please allow four to six weeks for review. Rocky MountainPower will notify you as to whether your proposed use is compatible with its easement.

### Never place the following items under or near a power line:

- houses, garages, sheds or barns
- second-story decks
- play equipment or tree houses
- flagpoles
- recreational vehicles that block access
- hot tubs or pools
- fences that block access
- antennas or satellite dishes
- scaffolding or ladders
- stored materials such as pipes, containers, hay bales
- mechanical equipment or flammable materials
- anything children or adults may climb

# APPLICATION FOR PROPOSED USE OF ROCKY MOUNTAIN POWER RIGHT OF WAY

1. Name of applicant: \_\_\_\_\_
2. Name of company applicant is representing: \_\_\_\_\_
3. Address of applicant: \_\_\_\_\_
4. City, state & zip of applicant: \_\_\_\_\_
5. Phone # of applicant: Home: \_\_\_\_\_ Work: \_\_\_\_\_  
Cell: \_\_\_\_\_ Fax: \_\_\_\_\_
6. Site address of proposed use: \_\_\_\_\_
7. City, state & zip of site address: \_\_\_\_\_

PROVIDE A COUNTY ASSESSOR'S MAP SHOWING THE PROPERTY BOUNDARY LINES OF PROPOSED USE IN RELATION TO ROCKY MOUNTAIN POWER'S FACILITIES (SHOW POLE NUMBERS INVOLVED). PROVIDE ALL NECESSARY MEASUREMENTS, INCLUDING DISTANCE FROM ROCKY MOUNTAIN POWER'S FACILITIES. (ATTACH DRAWINGS OF INTENDED USE IN RELATION TO ROCKY MOUNTAIN POWER FACILITIES)

\_\_\_\_\_ \*POLE OR TOWER STRUCTURE IDENTIFICATION NUMBER

\_\_\_\_\_ \*POLE OR TOWER STRUCTURE IDENTIFICATION NUMBER

\* located on metal sign on utility pole or tower if overhead line

Tax lot or parcel number: \_\_\_\_\_

QUARTER SECTION(S)	SECTION(S)	TOWNSHIP	RANGE	COUNTY	STATE
_____	_____	_____	_____	_____	_____

Purpose for which right of way is to be used

- |  |   |   |
|--|---|---|
| <input type="checkbox"/> <b>Driveway/roadway</b><br><br>Width _____<br><br>Material _____<br><br>Private _____<br><br>Public _____ | <input type="checkbox"/> <b>Pipelines</b><br><br>Type: <input type="checkbox"/> Gas <input type="checkbox"/> Sewer <input type="checkbox"/> Water<br><br>Diameter _____<br><br>Material _____<br><br>Buried depth _____ | <input type="checkbox"/> <b>Electric service line</b><br><input type="checkbox"/> <b>Electric transmission line</b><br><br>Voltage _____<br><br>Underground _____<br><br>Overhead _____ |
|--|---|---|

Other use: (describe in detail proposed use)

\_\_\_\_\_

\_\_\_\_\_

(Please include all dimensions of proposed project)

<b>Applicant name</b>	<b>Applicant title</b>
-----------------------	------------------------

*Once completed, send with all pertinent drawings to:*

**Rocky Mountain Power**  
**Attn: Rights-of-Way Department**  
**1407 West North Temple #110**  
**Salt Lake City, UT 84116**

Once we have received the application, notification will be provided to applicant indicating denial of proposed usage or approval with conditions. **Please be advised that the project may not commence prior to written approval from Rocky Mountain Power. Please allow 4 to 6 weeks for review and consideration of your application.**

