

“EPO is an outstanding tool that Snow College uses to manage our Richfield campus energy consumption. Through regular monitoring and actively managing peak demand, we’ve succeeded in bringing energy costs down considerably.”

– Marvin L. Dodge  
Vice President, Snow College

## Features of EPO

**Summary statistics** – Review comprehensive power use and demand data in clear formats.

**Load duration curve** – Assess high-, low- and intermediate-load duration to develop savings strategies.

**Daily and hourly usage data** – Chart usage and demand patterns to target money-saving tactics.

Try our demo version at  
[rockymountainpower.net/profiler](http://rockymountainpower.net/profiler)



© 2014 Rocky Mountain Power

You’ll be pleased with the results you can achieve – simply and affordably.

To get started, contact your Rocky Mountain Power account manager or visit [rockymountainpower.net/profiler](http://rockymountainpower.net/profiler)



*Let’s turn the answers on.*

# Energy Profiler Online

CONVERT ENERGY DATA  
INTO MONEY-SAVING INFORMATION



Timely data can pay big dividends – particularly for customers whose bottom line is significantly affected by energy expenditures.



*Let’s turn the answers on.*

# Start with the facts

Energy Profiler Online monitors your electricity consumption and converts this data into easy-to-understand graphs and reports.

It's simple. Once you're enrolled, your daily power usage information will be posted to a secure, password-protected Internet site for use at any time.

## In seconds you can

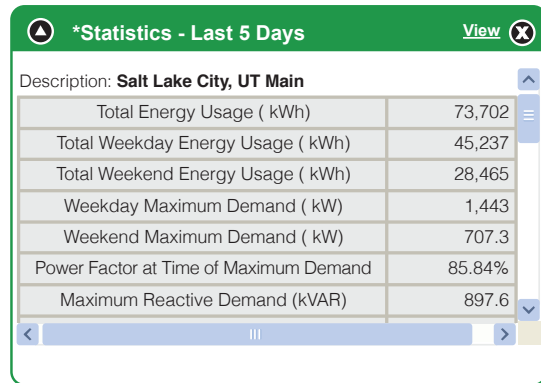
- Track your energy usage vs. budget
- Find energy issues that may be wasting money
- Manage monthly demand charges
- Measure effectiveness of your energy efficiency projects

# Develop a plan

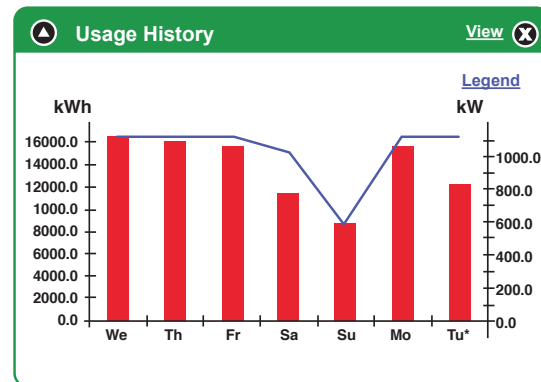
With EPO, you convert basic energy data into useful information. That's when critical energy decisions become manageable.

## Summary Statistics

EPO summarizes your energy use in simple, easy-to-use graphs and tables.

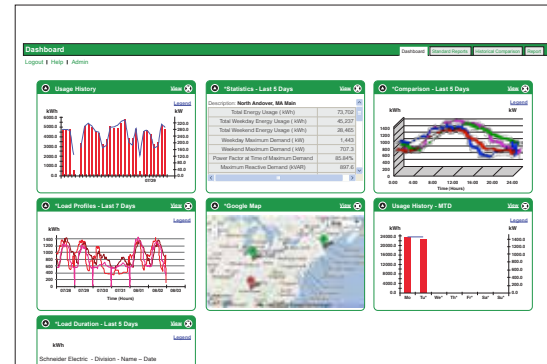


View electricity use and demand levels over a specified day or date range.

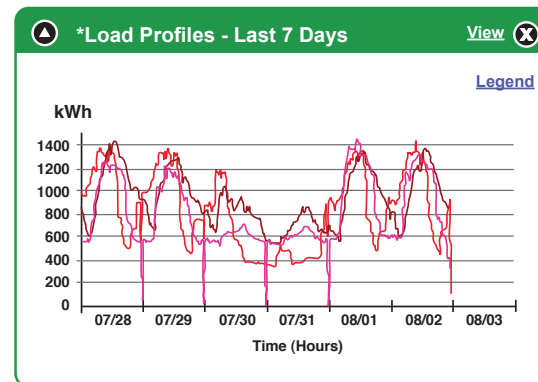


# Use the tools

Customize your EPO dashboard to provide energy information and statistics.



The average load profile function calculates and displays average load data from weekday, weekend and peak day demand levels for the specified time period.



# Real-time pulse data

If you have a need to access usage data or metering information on a real-time basis, Rocky Mountain Power can install equipment to provide meter pulse data.

There are two types of meter pulse access:

- KYZ Pulse Access using a company standard commercial meter
- Digital Pulse Access using a high-end meter

Real-time pulse data is separate from EPO and offers complementary information. Only one type of meter pulse access is available per installation and an additional contract and fees apply. Please contact your account manager for pricing options.

Lifetime Products participates in Rocky Mountain Power's energy-saving programs to save money and improve production processes. Lifetime's Robert Adams, vice president of plant engineering (left) and Craig Bruderer, Rocky Mountain Power customer and community manager, at Lifetime's facility in Clearfield, Utah.

