

Rocky Mountain Power  
Exhibit RMP\_\_\_(A-4)  
Docket No. 20000-\_\_\_-EN-20

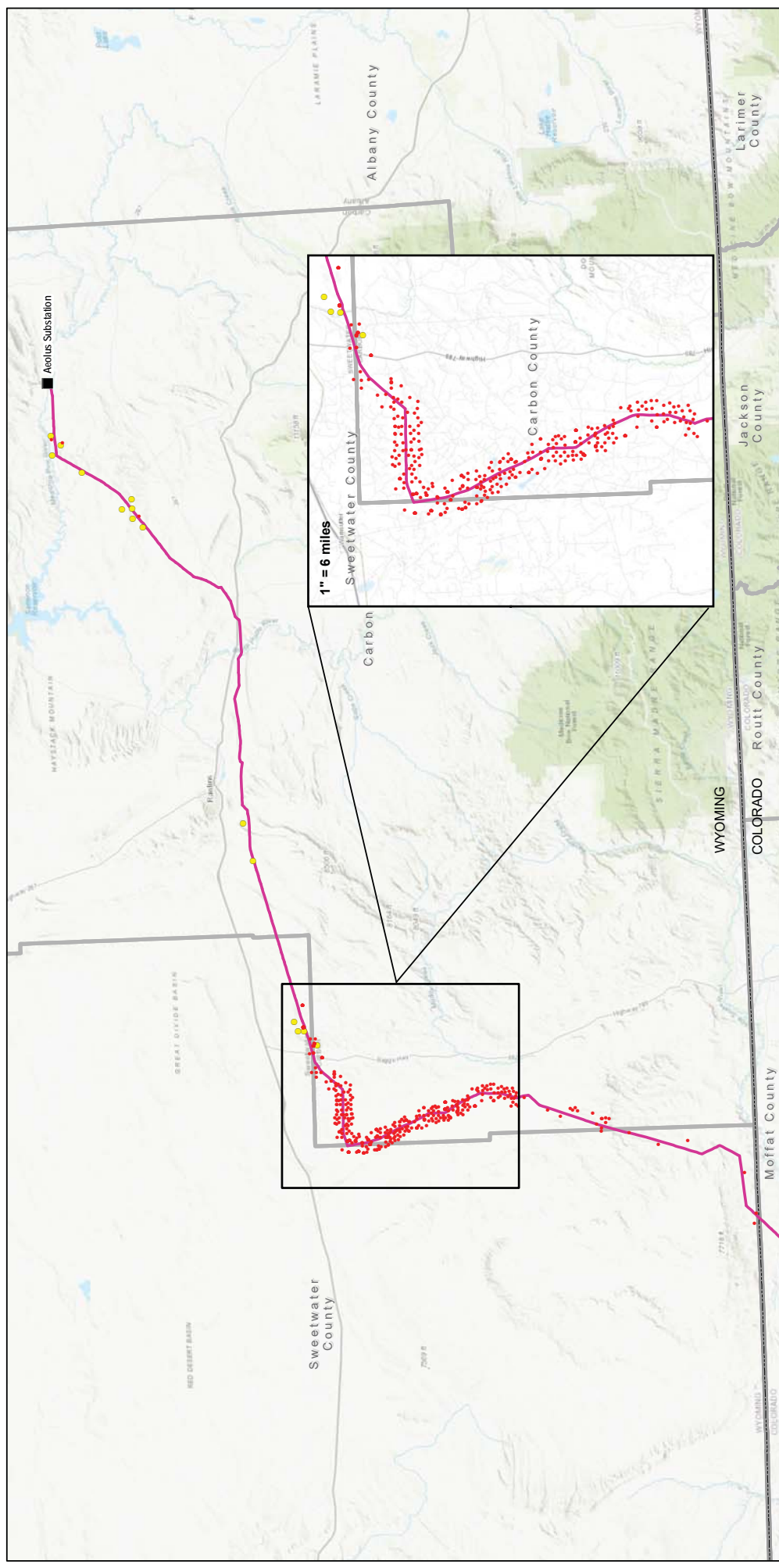
BEFORE THE WYOMING PUBLIC SERVICE  
COMMISSION

ROCKY MOUNTAIN POWER

---

Exhibit Accompanying Application  
Transmission Projects: Operating Mineral Deposit Maps

August 2020



**Transmission Projects**  
**Exhibit A-4 Nearby Operating Mineral Deposits in Wyoming Gateway South**

Scale: 1 in = 10 miles  
 0 10 20 Miles

**PACIFICORP**  
AN ENERGY SERVICES COMPANY

**POWER ENGINEERS**  
AN ENERGY SERVICES COMPANY

Page 1 of 1
Date: 6/9/2020
1 in = 10 miles
Initials Rev B
JN

**Legend**

- Substation Location
- Oil & Gas Well within 1 Mile
- Coal Mine within 1 mile (WSGS, 2019 & WDEQ, 2019)
- Gateway South
- County Boundary
- State Boundary

**Inset Map:** Shows the location of the study area within Wyoming, Colorado, and Utah. A red box highlights the study area in the southeastern part of Wyoming.

J:\DD\GIS01 Applications\To\_RMP\20200602\_CPO\maps\GWS\_RDF\_4\_11x17L\_GWInset.mxd



**Transmission Projects**  
**Exhibit A-4 Nearby Operating Mineral Deposits in Wyoming Gateway West Segment D1**

Page 1 of 1  
 Date: 6/9/2020  
 1 in = 7 miles  
 Initials: JN Rev: B

Scale: 0 7 14 Miles

Logos: PACIFICORP, POWER ENGINEERS

**Legend**

- Substation Location
- Oil & Gas Well within 1 Mile
- Gateway West Segment D1 - 1Wa
- Gateway West Segment D1 - 1Wc
- County Boundary
- State Boundary

Inset Map: Wyoming, Colorado, Utah, Nevada, Denver, Las Vegas, Salt Lake City, Reno, Los Angeles

J:\DDE\IS01 Applications\to\_RMP\20200602\_CPO\Maps\GWS\_RDF4\_11x17L\_D1.mxd