

Rocky Mountain Power  
Exhibit RMP\_\_(RAV-3)  
Docket No. 17-035-40  
Witness: Rick A. Vail

BEFORE THE PUBLIC SERVICE COMMISSION  
OF THE STATE OF UTAH

ROCKY MOUNTAIN POWER

---

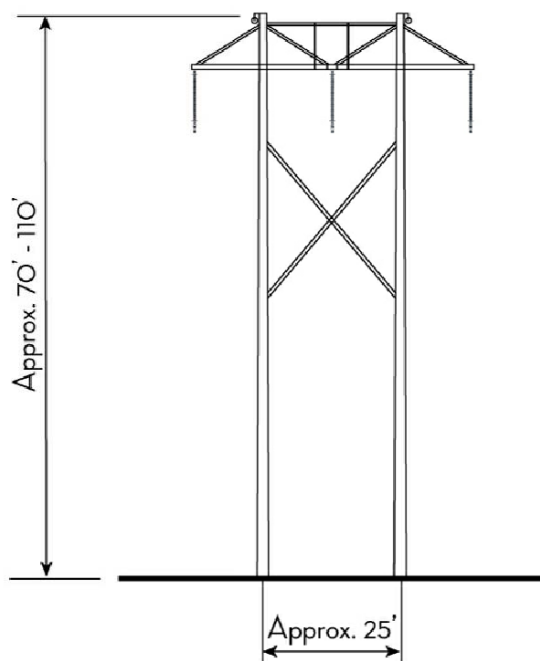
Exhibit Accompanying Direct Testimony of Rick A. Vail

345 kV Tower Design

June 2017

THIS DRAWING WAS PREPARED BY POWER ENGINEERS, INC. FOR A SPECIFIC PROJECT, TAKING INTO CONSIDERATION THE SPECIFIC AND UNIQUE REQUIREMENTS OF THE PROJECT. REUSE OF THIS DRAWING OR ANY INFORMATION CONTAINED IN THIS DRAWING FOR ANY PURPOSE IS PROHIBITED UNLESS WRITTEN PERMISSION FROM BOTH POWER AND POWER'S CLIENT IS GRANTED.

A	ISSUED FOR REVIEW	06/22/17	JLQ	KB		
REV	REVISIONS	DATE	DRN	DSGN	CKD	APPD



FIGURE\_01.dwg

		DSGN	KB	06/22/17		PACIFICORP	JOB NUMBER	REV
		DRN	JLQ	06/22/17		ENERGY GATEWAY WEST AEOLUS TO JIM BRIDGER	145986	
		CKD				345kV STRUCTURE	DRAWING NUMBER	S7-2
		SCALE:		NTS				
REFERENCE DRAWINGS		FOR 8.5x11 DWG ONLY						