



voices

THE RIGHT ANSWER WINS

Through May 10, all customers with the right answer to this month's question will be entered into a drawing for a chance to win a home electric energy-savings kit.

Q: How many kilowatt-hours of renewable energy did Blue Sky customers support in 2009?

Choose from one of two ways to enter: log on to rockymountainpower.net/voices or mail to:

Right Answer
Rocky Mountain Power
201 S. Main, Suite 2400
Salt Lake City, UT 84111

Winners will be notified by mail. Limit one entry per household.

THE LATEST WORD

Supporting communities

The Rocky Mountain Power Foundation granted more than \$405,500 to nonprofit organizations in Utah, Idaho and Wyoming during the first quarter of the year. Since 1988, the foundation has donated more than \$48.8 million to nonprofit groups.

Some organizations in Utah that received grants during the first quarter were:

- Your Community in Unity, Brigham City
- Family Support Center of Southwestern Utah, Cedar City
- Boys & Girls Club of Utah County, Provo
- Valley Mental Health Foundation, Salt Lake City

For more information on the organizations supported through the foundation, visit rockymountainpower.net/foundation.

Cool Keeper keeps it green

Earth Day is April 22, but it's also a reminder for us to lessen our environmental footprint year round. Start by joining our free **wattsmart** Cool Keeper program.

Help manage Utah's electricity peaks

Air conditioning consumes the most electricity in Utah each summer. Cool Keeper helps us manage the demand for electricity during those peak summer periods when electricity is the most expensive to generate or buy.

When you're enrolled in Cool Keeper, on hot weekday afternoons when the demand



for electricity soars, a device installed on your central air conditioner automatically turns your air conditioner off and on every

15 minutes. It stops when the demand drops. The temperature in your home may increase 1 to 3 degrees – not enough to really notice – but the small change in your energy use helps manage electricity peaks.

Get \$20 to participate

For joining Cool Keeper, we'll give you a \$20 annual credit on your bill in the fall. Cool Keeper, one of our **wattsmart** programs, runs in June, July and August.

Enroll at rockymountainpower.net/coolkeeper or call toll free 1-800-357-9214. You'll be helping the environment by helping all of Utah better manage its energy during summer.

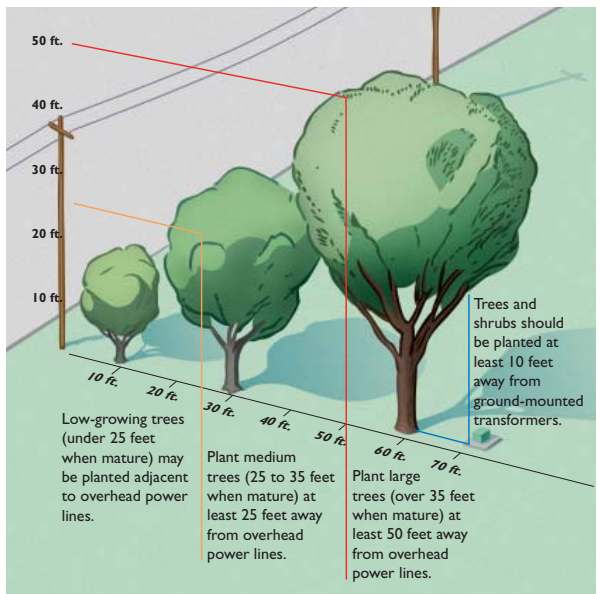


Help keep trees clear of power lines

Trees growing too close to power lines can cause power outages, start fires or create other hazards. Each year we invest millions of dollars in pruning and removing problem trees – even receiving the Tree Line USA award from the National Arbor Day Foundation in 2009. But you can help too.

Please consider nearby power lines when choosing a tree to plant. Trees under or adjacent to overhead lines should grow no taller than 25 feet.

For help in choosing the right tree, download our free booklet, *Small Trees for Small Places*, at



rockymountainpower.net/trees.

Or call us toll free at 1-888-221-7070. Also, stay clear of power lines when pruning or planting trees. (See Safety Matters on back.)

BRIGHT IDEAS

Proper CFL disposal

Compact fluorescent light bulbs use about 75 percent less electricity than incandescent bulbs. And they last 7 to 10 times longer. But because they contain tiny amounts of mercury, they should be disposed of properly so they don't end up in landfills.

Find a local retailer that recycles used CFLs or check the U.S. Environmental Protection Agency's Web site, www.epa.gov/bulbrecycling, or www.lamprecycle.org, on where to recycle CFLs.

If there's no accommodating recycler in your area, seal the CFL in two plastic bags before placing it in your normal trash. CFLs should not be incinerated.

Visit rockymountainpower.net/cfldisposal for more information.

SAFETY MATTERS

Before you dig

Before digging to build a fence or when landscaping this spring, please call 811 to locate all nearby underground utilities for free.

Making contact with an energized underground electrical line can cause serious injury or death. You also could disrupt utility services to neighboring homes or businesses.

Call 811 at least 48 hours before digging or visit rockymountainpower.net/dig for the number of your local utility locating service.

Customers who are facing financial difficulties, and may not be able to pay their energy bills, are encouraged to contact Rocky Mountain Power. We have a variety of options to help. Call us toll free at 1-888-221-7070.

Students say, "Unplug the thug"

Five ninth-graders from Holladay, Utah are urging us to save energy – one battery charger at a time. As part of Joanne Brown's science class at Olympus Junior High, the team created "Unplug the thug" stickers to remind everyone to unplug battery chargers when done charging phones and other devices.

With 271 million cell phone users in the country, the students estimate we can save more than 243 million kilowatt-hours of electricity by simply unplugging the chargers – enough electricity to power about 25,000 typical Rocky Mountain Power customers' homes for a year.

The students' idea earned their school a \$10,000 scholarship from the Lexus Eco Challenge, and put them in the running for one of



Ninth-grade students (l to r) Eric Longberg, Steven Pascual, Alyssa Claerhout, Alice Abrams and Alicia Muse urge customers to "Unplug the thug."

two \$30,000 national grand prizes.

To help spread the message from these **wattsmart** students, we're offering their message as a handy energy efficiency sticker. Order yours at rockymountainpower.net/order or call us toll free at 1-888-221-7070.

Blue Sky clearly makes a difference

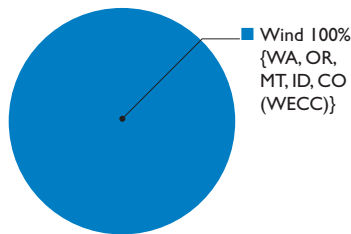
More than 71,000 customers are making a difference in the environment by participating in our Green-e Energy® Certified Blue Skysm renewable energy program. In 2009, their purchases had the environmental benefit equal to not driving more than 714 million miles or removing 60,962 cars from the road.

In addition, customer purchases supported 576 million kilowatt-hours of renewable energy. In 2009 program participants also

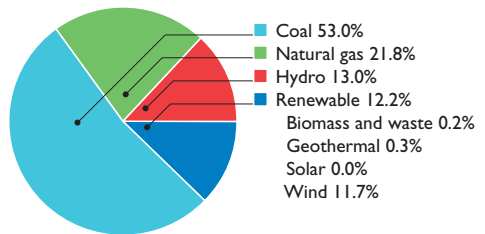
supported the development of 13 community-based renewable energy projects in Utah.

Making a difference is easy with Blue Sky. For as little as an additional \$1.95 a month on your bill, you'll support the development of renewable energy in the region separate from the cost-effective renewable energy that we acquire to serve all customers. Learn more at rockymountainpower.net/bluesky or call us toll free at 1-800-769-3717.

Blue Sky Block resource mix*



Rocky Mountain Power basic service resource mix**



Blue Sky focuses on supporting western regionally supplied, newly developed renewable energy to match customer purchases. The first chart shows the renewable resources the Blue Sky program supports and where they are generated. The second chart shows Rocky Mountain Power's basic service resource mix, including purchased resources.

* These figures reflect the actual renewable energy customers supported through their participation in the Blue Sky Block program in 2009. Information represents purchased renewable resources under the Blue Sky program and excludes renewable energy supported/produced from community-based renewable projects (including Spanish Fork wind farm) that received funding through the Blue Sky funding award program. Generation supported in 2010 will support Western Region resources.

**Figures current as of 2009 and include purchased resources.

To reach us, call toll free: 1-888-221-7070, 24 hours a day, 7 days a week. To report an outage, call toll free: 1-877-548-3768 (1-877-LITESOUT).

Para un representante que habla español: 1-888-225-2611. Su llamada será gratuita.

On the Web: rockymountainpower.net



Let's turn the answers on.