



# VOICES

## THE RIGHT ANSWER WINS

Through May 10, all customers with the right answer to this month's question will be entered into a drawing for a chance to win a home electric energy-savings kit.

**Q:** How many kilowatt-hours of renewable energy did Blue Sky customers support in 2009?

Choose from one of two ways to enter: log on to [rockymountainpower.net/voices](http://rockymountainpower.net/voices) or mail to:

Right Answer  
Rocky Mountain Power  
201 S. Main, Suite 2400  
Salt Lake City, UT 84111

Winners will be notified by mail. Limit one entry per household.

## THE LATEST WORD

### Supporting communities

The Rocky Mountain Power Foundation granted more than \$405,500 to nonprofit organizations in Wyoming, Idaho and Utah during the first quarter of the year. Since 1988 the foundation has donated more than \$48.8 million to nonprofit groups.

Some organizations in Wyoming that received grants during the first quarter were:

- Central Wyoming Hospice Program, Casper
- Young At Heart Senior Citizens Center, Rock Springs
- Big Horn Basin Counseling Services, Lovell
- Solutions For Life, Douglas

For more information on the organizations supported through the foundation, visit [rockymountainpower.net/foundation](http://rockymountainpower.net/foundation).

## Celebrate Earth Day – **save energy**

Earth Day is April 22 – a perfect time to get ready for saving energy in the hot months ahead and lighten your environmental footprint. Get cash incentives from our Home Energy Savings program on a number of energy-saving products and services.



### Be cool with cash back

Get up to \$250 back when you install an ENERGY STAR® high-efficiency central air conditioner, which is about 14 percent more efficient than a standard model.

We're also offering incentives for installing evaporative coolers and for tuning up an existing central air conditioner.



### Save twice with new appliances

Buy a qualifying ENERGY STAR refrigerator, clothes washer or dishwasher and get cash back. These high-efficiency appliances are designed to save energy and water while delivering superior performance.

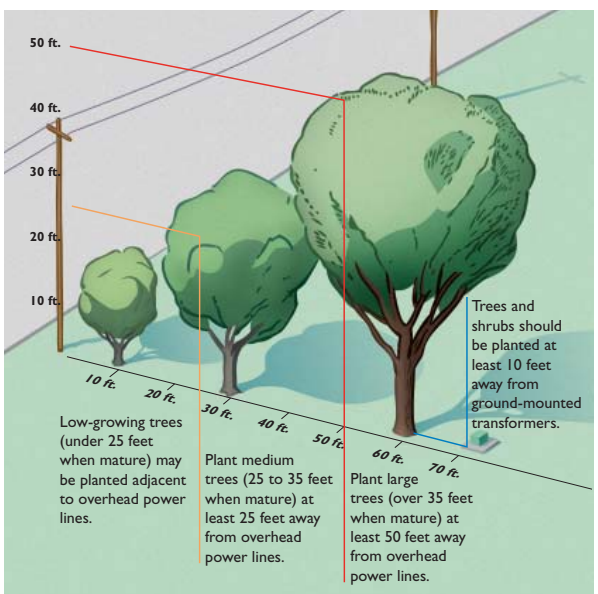
Visit [rockymountainpower.net/hes](http://rockymountainpower.net/hes) for programs and incentives to cut your energy use this summer. Or call toll free at 1-800-942-0266.

## Help keep trees clear of **power lines**

Trees growing too close to power lines can cause power outages, start fires or create other hazards. Each year we invest millions of dollars in pruning and removing problem trees – even receiving the Tree Line USA award from the National Arbor Day Foundation in 2009. But you can help too.

Please consider nearby power lines when choosing a tree to plant. Trees under or adjacent to overhead lines should grow no taller than 25 feet.

For help in choosing the right tree, download our free booklet, *Small Trees for Small Places*, at



[rockymountainpower.net/trees](http://rockymountainpower.net/trees).

Or call us toll free at 1-888-221-7070. Also, stay clear of power lines when pruning or planting trees. (See Safety Matters on back.)

## Proper CFL disposal

Compact fluorescent light bulbs use about 75 percent less electricity than incandescent bulbs. And they last 7 to 10 times longer. But because they contain tiny amounts of mercury, they should be disposed of properly so they don't end up in landfills.

Find a local retailer that recycles used CFLs or check the U.S. Environmental Protection Agency's Web site, [www.epa.gov/bulbrecycling](http://www.epa.gov/bulbrecycling), or [www.lamprecycle.org](http://www.lamprecycle.org), on where to recycle CFLs.

If there's no accommodating recycler in your area, seal the CFL in two plastic bags before placing it in your normal trash. CFLs should not be incinerated.

Visit [rockymountainpower.net/cfldisposal](http://rockymountainpower.net/cfldisposal) for more information.

# Blue Sky clearly makes a difference

More than 71,000 customers are making a difference in the environment by participating in our Green-e Energy® Certified Blue Sky<sup>sm</sup> renewable energy program. In 2009, their purchases had the environmental benefit equal to not driving more than 714 million miles or removing 60,962 cars from the road.

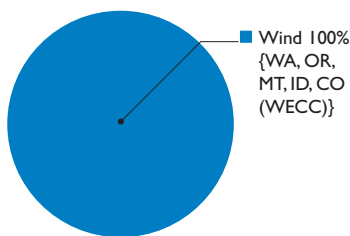
In all, customer purchases supported 576 million kilowatt-hours of renewable energy.

Program participants also are supporting the development of community-based renewable

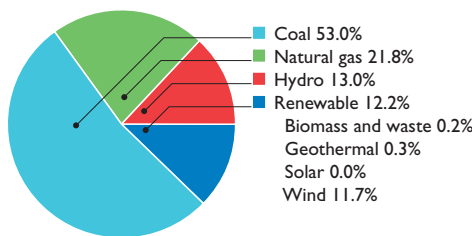
energy projects in Wyoming, such as the three 2.4-kilowatt wind turbines that will be installed at Grant Elementary School in Glenrock.

Making a difference is easy with Blue Sky. For as little as an additional \$1.95 a month on your bill, you'll support the development of renewable energy in the region separate from the cost-effective renewable energy that we acquire to serve all customers. Learn more at [rockymountainpower.net/bluesky](http://rockymountainpower.net/bluesky) or call us toll free at 1-800-769-3717.

Blue Sky Block resource mix\*



Rocky Mountain Power basic service resource mix\*\*



Blue Sky focuses on supporting western regionally supplied, newly developed renewable energy to match customer purchases. The first chart shows the renewable resources the Blue Sky program supports and where they are generated. The second chart shows Rocky Mountain Power's basic service resource mix, including purchased resources.

\* These figures reflect the actual renewable energy customers supported through their participation in the Blue Sky Block program in 2009. Information represents purchased renewable resources under the Blue Sky program and excludes renewable energy supported/produced from community-based renewable projects (including Spanish Fork wind farm) that received funding through the Blue Sky funding award program. Generation supported in 2010 will support Western Region resources.

\*\*Figures current as of 2009 and include purchased resources.

## SAFETY MATTERS

### Before you dig

Before digging to build a fence or when landscaping this spring, please call 811 to locate all nearby underground utilities for free.

Making contact with an energized underground electrical line can cause serious injury or death. You also could disrupt utility services to neighboring homes or businesses.

Call 811 at least 48 hours before digging or visit [rockymountainpower.net/dig](http://rockymountainpower.net/dig) for the number of your local utility locating service.

## Students say, "Unplug the thug"

Five ninth-graders from Holladay, Utah are urging us to save energy – one battery charger at a time. As part of Joanne Brown's science class at Olympus Junior High, the team created "Unplug the thug" stickers to remind everyone to unplug battery chargers when done charging phones and other devices.

With 271 million cell phone users in the country, the students estimate we can save more than 243 million kilowatt-hours of electricity by simply unplugging the chargers – enough electricity to power about 25,000 typical Rocky Mountain Power customers' homes for a year.

The students' idea earned their school a \$10,000 scholarship from the Lexus Eco Challenge, and put them in the running for one of



Ninth-grade students (l to r) Eric Longberg, Steven Pascual, Alyssa Claerhout, Alice Abrams and Alicia Muse urge customers to "Unplug the thug."



two \$30,000 national grand prizes.

To help spread the message from these [wattsmart](http://wattsmart.com) students, we're offering their message as a handy energy efficiency sticker. Order yours at [rockymountainpower.net/order](http://rockymountainpower.net/order) or

call us toll free at 1-888-221-7070.

Customers who are facing financial difficulties, and may not be able to pay their energy bills, are encouraged to contact Rocky Mountain Power. We have a variety of options to help. Call us toll free at 1-888-221-7070.

To reach us, call toll free: 1-888-221-7070, 24 hours a day, 7 days a week. To report an outage, call toll free: 1-877-548-3768 (1-877-LITESOUT).

Para un representante que habla español: 1-888-225-2611. Su llamada será gratuita.

On the Web: [rockymountainpower.net](http://rockymountainpower.net)



Let's turn the answers on.