

Sigurd to Red Butte

New transmission project to help meet area's growing need for electricity



As Utah grows, Rocky Mountain Power invests to keep pace

Rocky Mountain Power is always working to provide safe, reliable electrical service to meet the growing needs of its customers. Utah has been one of the fastest growing states in the nation for more than a decade and both new and existing customers have greater needs for energy than ever before – especially electricity. The recent economic recession has caused a slowing of this growth and the company has adjusted appropriately for customer needs. Still, demand for electricity is growing despite the economic conditions. Typical residential consumers today are using 26 percent more electricity than they did 20 years ago.

In 2007, Rocky Mountain Power committed to expanding its transmission network to ensure sufficient capacity will be available to meet the needs of its new and existing customers. This project will add an additional high-voltage transmission line carrying electricity from the existing Sigurd substation near Richfield to an expanded Red Butte substation near Central in Washington County. In addition to serving Rocky Mountain Power customers, this line will increase capacity and reliability for new and existing customers of the various municipal and rural electric systems in the state.



Let's turn the answers on.

This new transmission line will benefit customers by improving system reliability now and provide increased supply and flexibility to meet customer needs in the future. To meet expected demand, this project is planned to be completed and in service to customers in 2014.

Project description

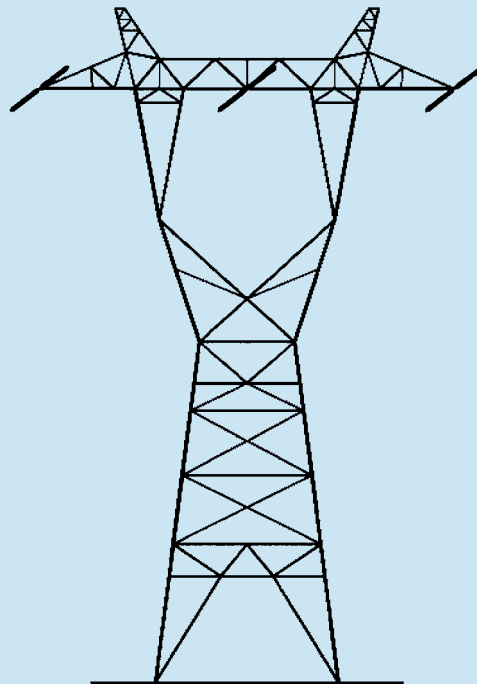
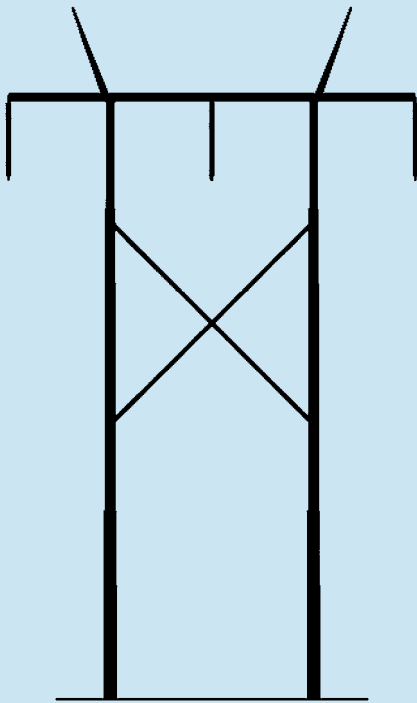
The exact placement of the transmission line has not yet been determined. The proposed project will consist of a new, single-circuit 345,000-volt (345 kV) transmission line connecting the Sigurd substation, located approximately six miles northeast of Richfield in Sevier County, Utah, to the Red Butte substation, located southwest of the town of Central in Washington County, Utah. The line would be approximately 160 miles long. The structures, made of steel with self-weathering or dull galvanized finish, will vary in type depending on the location (see illustration below).

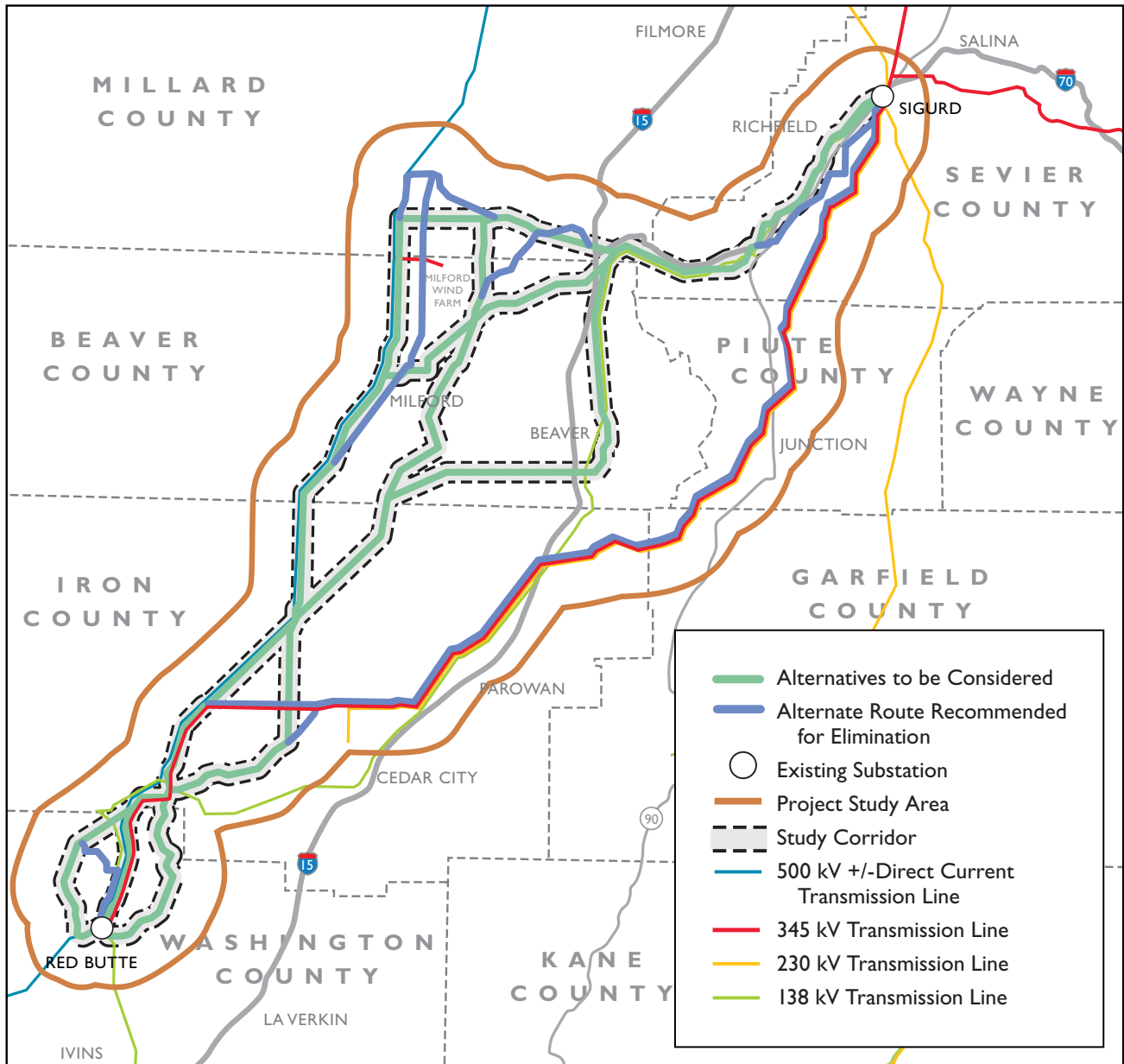
Route selection process

To date, Rocky Mountain Power has been working with local officials, gathering data, and conducting in-depth studies. Several community working groups have been formed, consisting of local leaders, to advise the company regarding local features, community issues and land use. To further ensure decisions regarding the final location are fully informed, Rocky Mountain Power will be hosting a number of meetings throughout the course of the project to provide details and collect comments from customers, landowners and other interested parties. The first series of meetings will be held February 2-10, 2010. Meetings will be held throughout the project timeline.

Many locations are being considered for the transmission line. The potential locations will be evaluated to ensure additional capacity and improved reliability is sufficient to meet the current and future needs of electric customers.

Typical structure types





To view this map online, visit the Sigurd to Red Butte project Web site at rockymountainpower.net/transmission.

Criteria used in the selection process include: reliability, safety, eventual cost to customers, accessibility, area to be served, other electric facility locations, technical feasibility, land use, etc.

Environmental review & permitting process

Because portions of the project will be built on federal lands, the Bureau of Land Management (BLM) will develop the Environmental Impact

Statement (EIS) regarding this project as part of the National Environmental Policy Act (NEPA). The NEPA process requires the BLM, working with Rocky Mountain Power, to develop an Environmental Impact Statement detailing an analysis of potential environmental impacts of a proposed range of reasonable alternatives for this project. The BLM is the lead agency for the NEPA process. Public participation is encouraged throughout the NEPA process and dates and

locations of public meetings will be published in local newspapers, mailed to project-specific mailing lists and posted on company and BLM Web sites. At the conclusion of this process the BLM and U.S. Forest Service will issue a right-of-way grant to build the proposed transmission line on federal property. The company will also apply for all necessary permits and approvals from other federal and state agencies and local jurisdictions.

Project timeline

- Public scoping – first quarter 2010
- Environmental Impact Statement – Dec. 2008-to be determined
- Informational meetings – 2009-project completion
- Permitting and obtaining rights of way – 2011-2012
- Construction – 2012-2014
- Estimated line in service for customers – Summer 2014

For more information, please contact us:

E-mail:

ConstructionProjects@pacificorp.com

Message line:

801-220-4221

Web:

rockymountainpower.net/transmission

Information for this project can be found by clicking on "Sigurd to Red Butte."



To submit official comments on the Sigurd to Red Butte project, please submit them directly to the Bureau of Land Management, Cedar City Field Office, Attn: Rob Wilson, 176 East D.L. Sargent Drive, Cedar City, UT 84721 or E-mail at utsrbproj@blm.gov or visit http://www.blm.gov/ut/st/en/fo/cedar_city/planning/sigurd_to_red_butte.html.

Comments submitted directly to Rocky Mountain Power are not considered part of the official BLM record.



Let's turn the answers on.